

# **2035 LA CROSSE AND LA CRESCENT METROPOLITAN AREA TRANSPORTATION PLAN**

## **Re-Affirmation of Action Plan to Address Roadway Deficiencies**

**May 19, 2010**

### **BACKGROUND:**

In the *2030 La Crosse and La Crescent Metropolitan Area Transportation Plan (MTP)*, adopted in 2005, the LAPC included an “action plan” to address area-wide roadway deficiencies, including those identified in the “North-South Corridor.”

Although significant planning and roadway improvements have been accomplished since 2005, congestion in the North-South Corridor still exists, making the action plan as relevant today as it was 5 years ago. At the May 19, 2010, the LAPC will be asked to review and re-affirm the following updated action plan, for inclusion in the 2010 Metropolitan Transportation Plan update.

### **ACTION PLAN:**

- **Aggressive Implementation of Policy-Based Actions.**  
All municipal councils, boards and staff, and other organizations (LAPC, DOT, etc.) will work to implement policy-based actions that address congestion. Such actions include the integration of Coulee Visions concepts in comprehensive plans, implementation of pulse node development in conjunction with the STH 16 Corridor Study, promotion and improvement of multimodal accommodations, deployment of a rapid response to incident team, enforcement of development policies that allow multimodal accommodations and access. Other congestion mitigation measures will be pursued by the LAPC technical committees, acting together with area municipalities and other agencies. Such measures could include employer sponsored bus passes, flexible and staggered work shifts, carpooling programs, parking and congestion studies, etc.
- **Construct the USH 53 Extended from CTH SS to Gillette St and 12th Avenue Extended from CTH SS to STH 16 project.**  
This project is included in the *2010 – 2013 La Crosse and La Crescent Metropolitan Area Transportation Improvement Program (TIP)* and is the recommended “northern section” of the New North/South Roadway recommended in the 1998 *La Crosse North-South Corridor Study, IH-90 to USH 14/61*. This project will be considered with reduced lane capacity if warranted by the reinforcement and reconstruction of the existing north/south grid network, such as the continuation of Oak Ave and 12<sup>th</sup> Ave and the distribution of other improvements on existing roadways.
- **Minimize the concentration of capacity improvements on a single roadway.**  
Improvements should be distributed on existing roadways as much as possible. Further study and modeling of distributed scenarios during the Coulee Connections Transportation Study will help determine the most appropriate improvements to address current and future deficiencies.
- **Complete the *Coulee Connections Transportation Study* to determine the most feasible improvements from Gillette St south.**

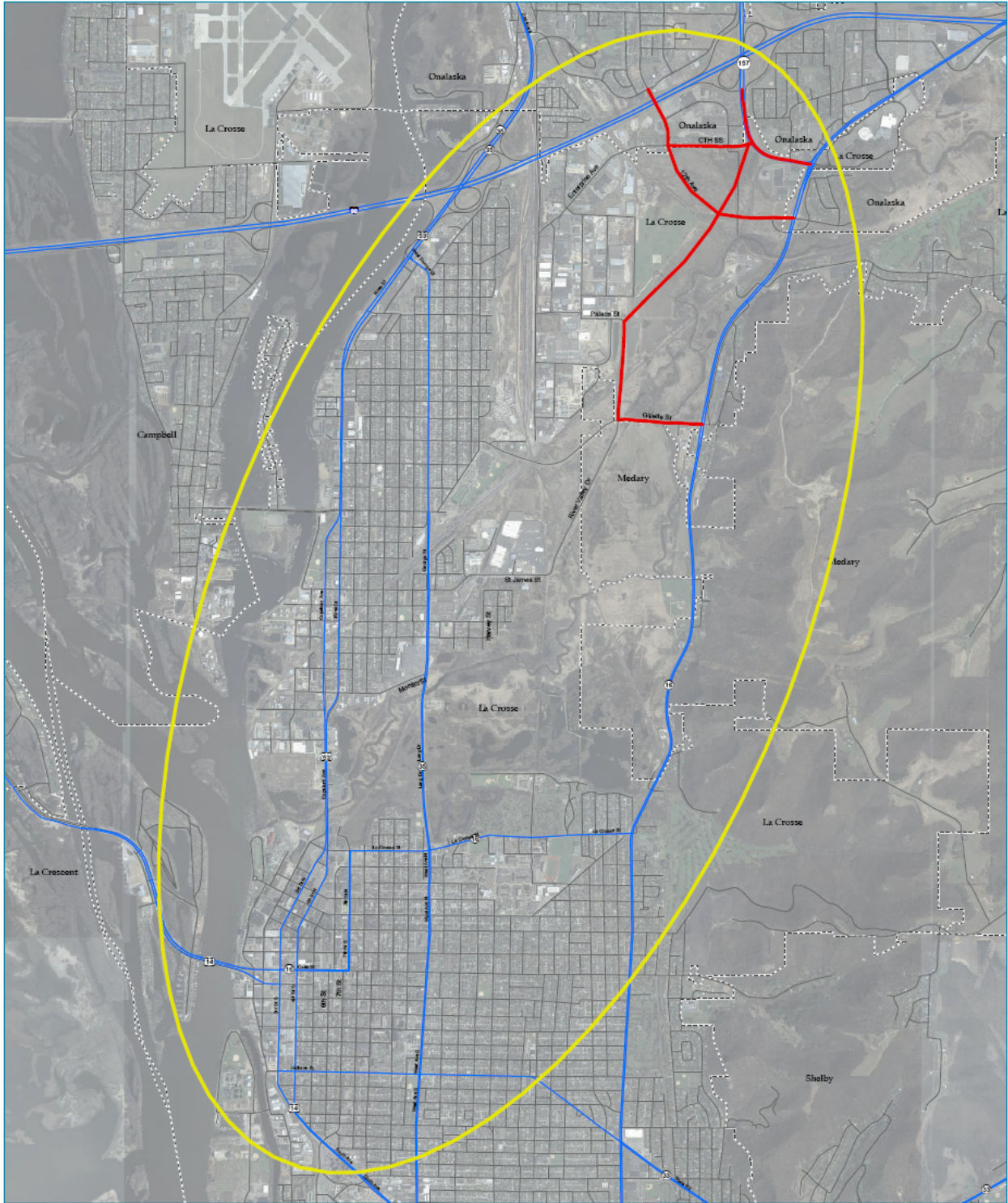
The LAPC will work with WisDOT to complete a detailed corridor study with a much more detailed scope than the current MTP update process. The corridor study will determine the most feasible and publicly-acceptable improvements to address the deficiencies in the north/south corridor from I-90 to South Ave. The corridor study will:

- Take into account the recommendation by the LAPC to proceed with the USH 53 Extended from CTH SS to Gillette St and 12th Avenue Extended from CTH SS to STH 16 project by concentrating on determining solutions from Gillette St south to USH 14/61.
  - Recommend solutions that integrate projects both north and south of Gillette St in a study area extending from I-90 to USH 14/61 (see attached map).
  - Consider the possible reduction in the number of recommended lanes for USH 53 extended through, for example, improvements to the existing grid system.
  - Re-evaluate the existing environmental impact statement (EIS) from the *La Crosse North-South Corridor Study, IH-90 to USH 14/61*.
  - Be consistent with the requirements of the metropolitan transportation planning process.
  - Recommend actions to expend Major Projects Program enumeration.
  - Initiate in late summer 2010, with study completion by late summer 2013.
- **Address congestion in downtown La Crosse and Onalaska without lane expansions.** Modeling forecasts existing and future deficiencies in the downtown areas of the Cities of La Crosse and Onalaska. City planners in the cities are opposed to removing parking or taking other actions to increase capacity and speed traffic through the downtown areas. They would rather accept congestion while maintaining safety through traffic calming, traffic signal timing and other congestion mitigating activities.
- **Implement the recommendations of ongoing corridor studies.** Currently, the DOTs are studying the means to address identified congestion on STH 16 between West Salem and Onalaska, at the I 90 / TH 14/61 interchange at the Dresbach Bridge, and are planning operational improvements on many other projects in the region. LAPC communities will continue to implement these recommendations as efficiently as possible.
- **Implement roadway improvements through the TIP process.** The LAPC maintains the *Transportation Improvement Program for the La Crosse / La Crescent Urbanized Area* (TIP). The TIP is a four-year program of urban area transportation projects that may be conducted under FHWA, Federal Transit Administration (FTA), and state programs. All projects proposed in the TIP are required to be consistent with the MTP and other area transportation programs. Many of the projects in the TIP will help address congestion through operational improvements. Unlike the MTP, the TIP is updated annually and constitutes the primary listing of ongoing and planned projects in the planning area.

## **COULEE CONNECTIONS TRANSPORTATION STUDY PROJECT AREA MAP:**

The following map illustrates the project area for the Coulee Connections Transportation Study:

# COULEE CONNECTIONS TRANSPORTATION STUDY AREA



— USH 53 AND 12TH AVE EXTENDED PROJECT — MAJOR ROADS - - - MUNICIPAL BOUNDARY

La Crosse Area  
Planning Committee  
April 2010.



0 0.05 0.1 0.2 0.3 0.4 0.5 0.6 Miles