



# 2011 MPO/DOT/RPC Conference La Crosse, WI



## Current Trends in Minnesota



Chu Wei, P.E.

Traffic Forecasting and Analysis Section  
Office of Transportation Data and Analysis



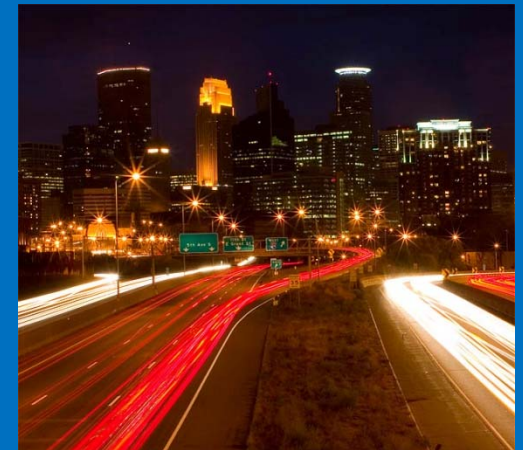
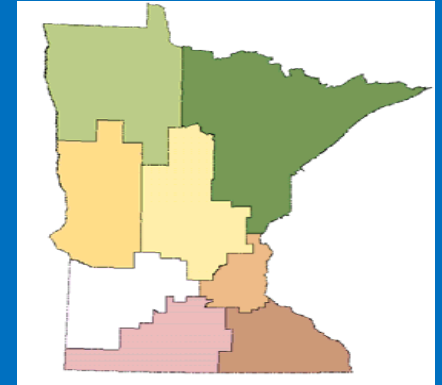


## Definition

VMT= Vehicle Miles of Travel

Traffic Volume x Segment Length (Miles)

VMT is used to measure the demand on our transportation network.





# Why VMT is important?

Funding allocation

Air quality planning

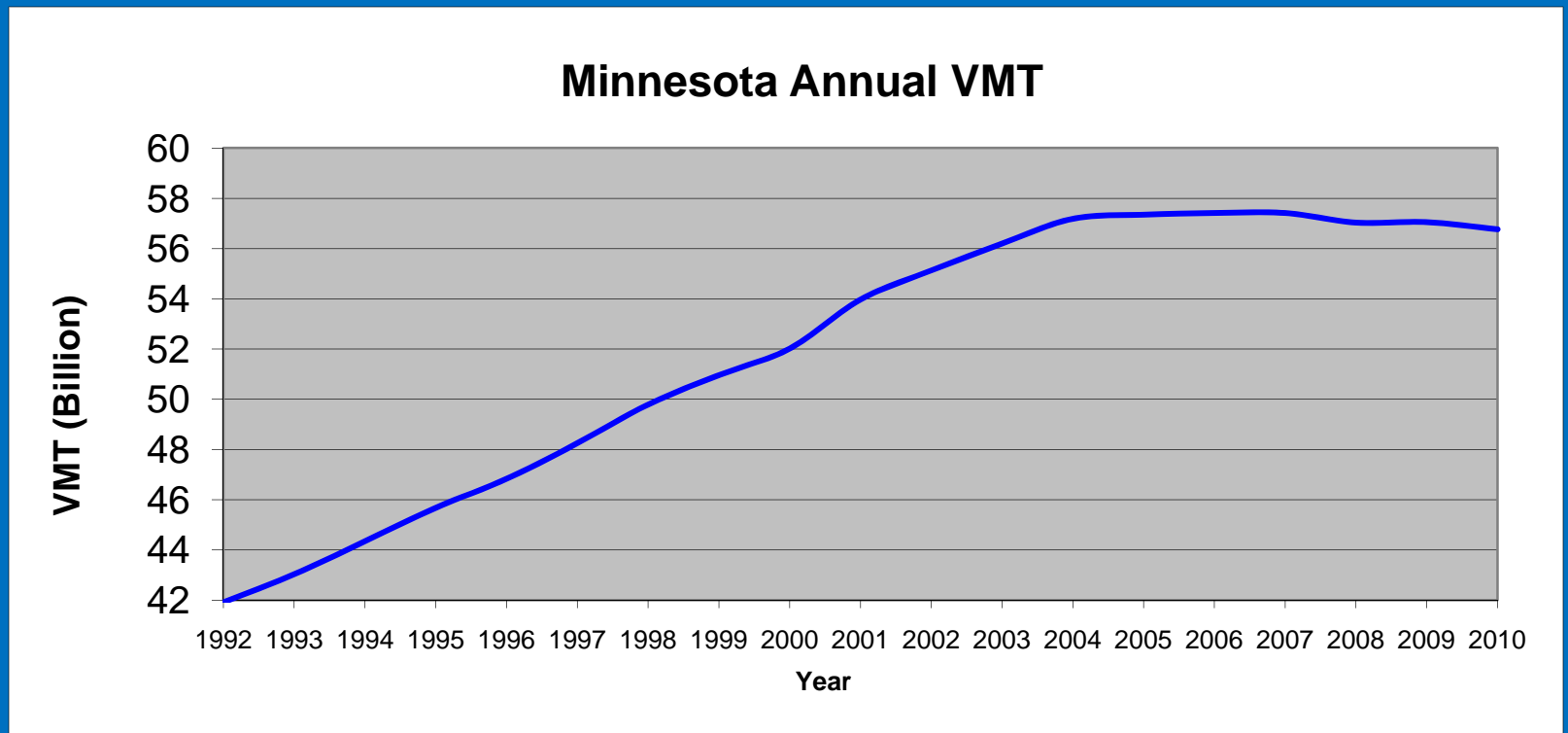
Transportation planning

Other Purposes





# Vehicle Miles Traveled Trends: 1992-2010



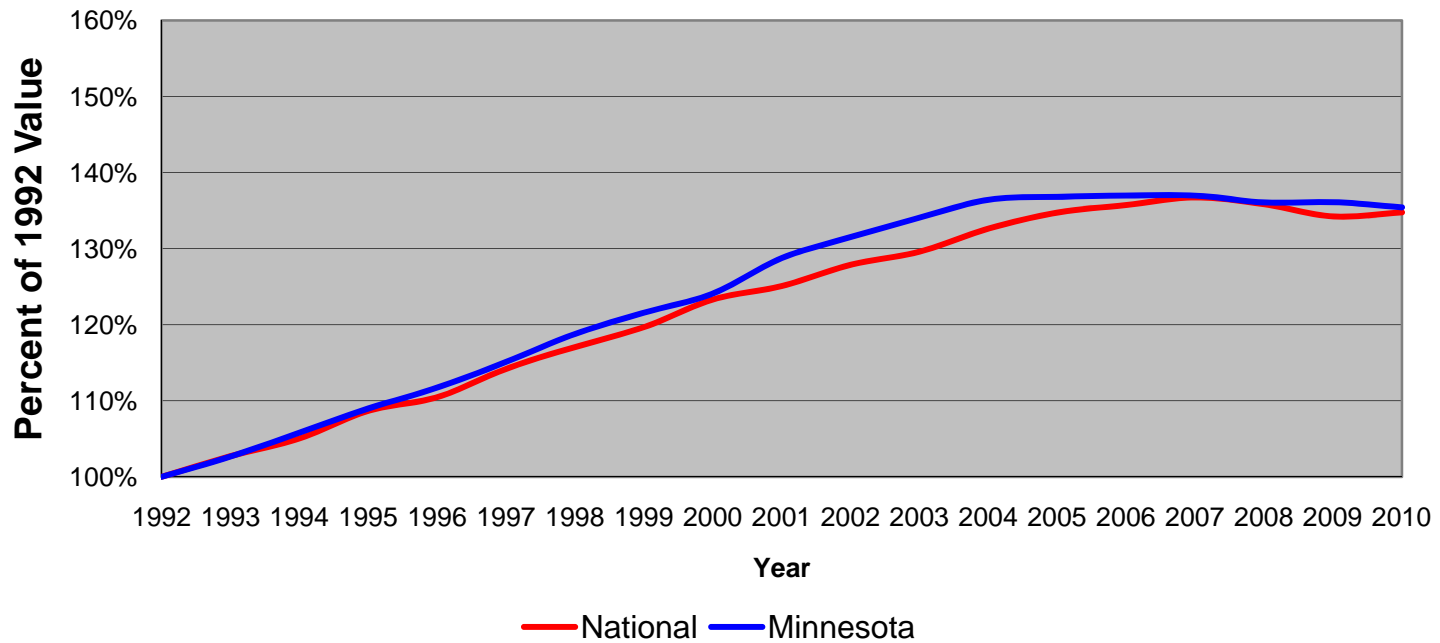
**The total VMT on all Minnesota Roads in 2010 was 56.8 Billion.**





# Vehicle Miles Traveled Trends: 1992-2010

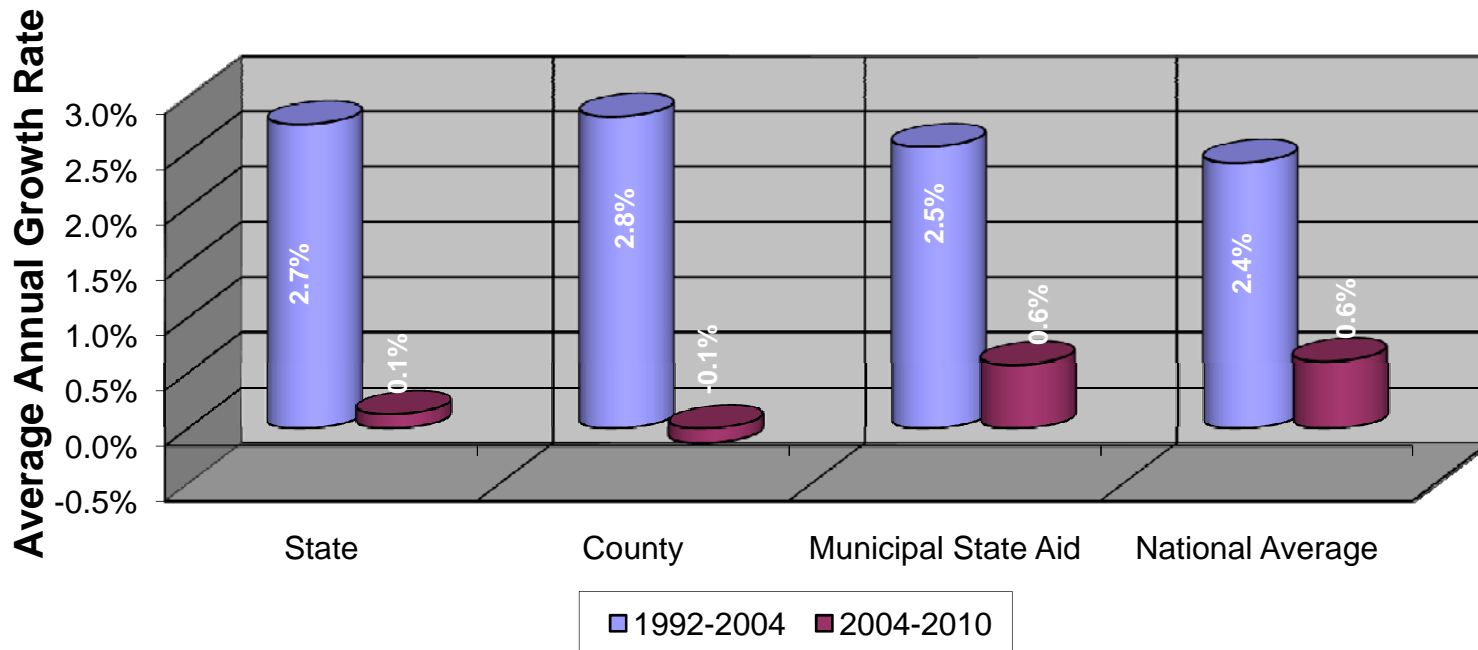
## Annual VMT Trends: 1992-2010



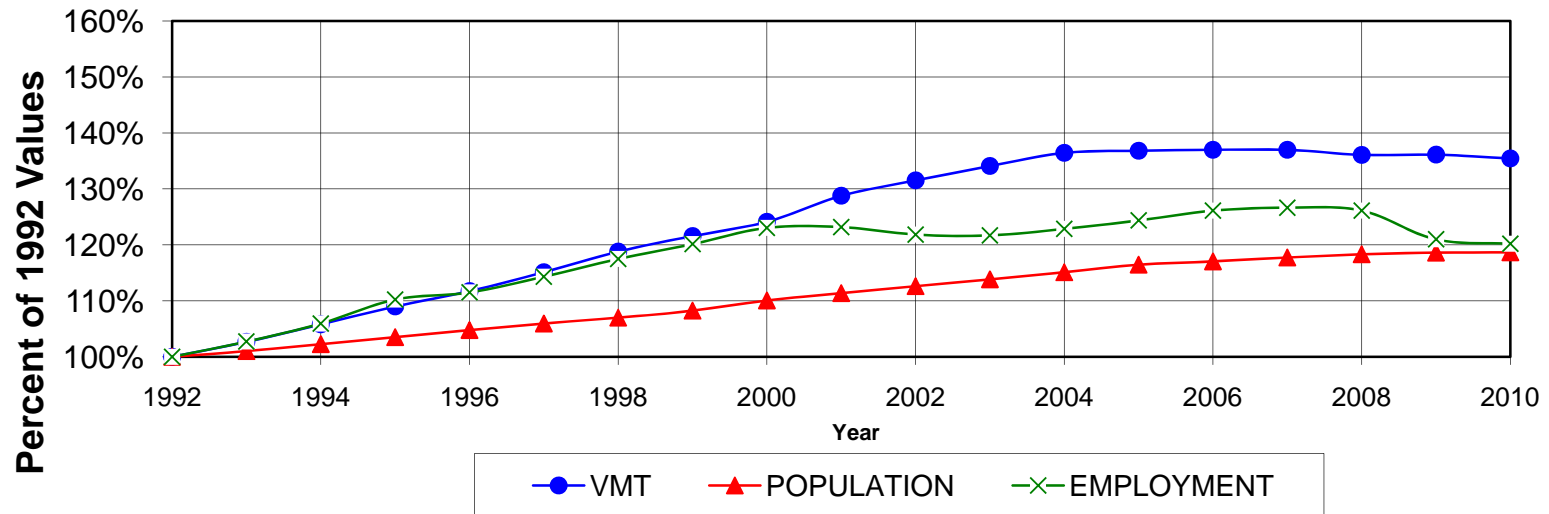


# Vehicle Miles Traveled

## Average Annual Growth Rates in VMT by Jurisdiction 1992-2004 & 2004-2010



## Annual Growth Trends:1992-2010

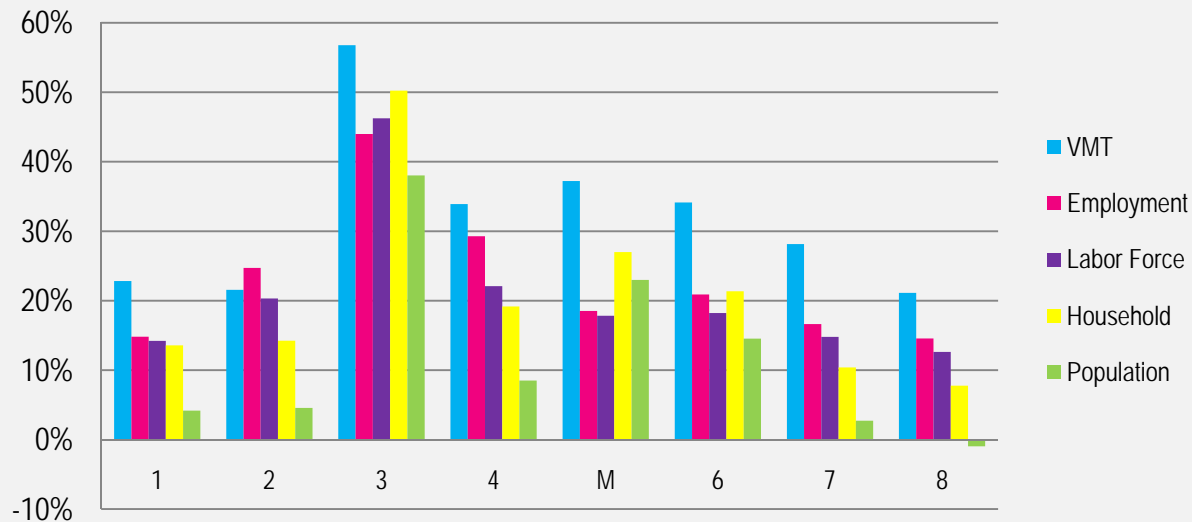


**VMT increased 35%**  
**Population increased 19%**  
**Employment increased 20%**



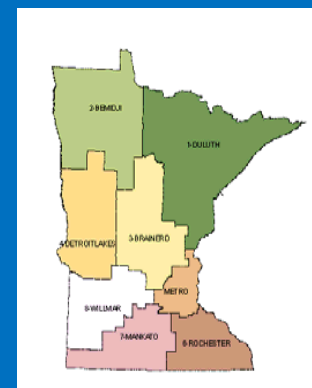


## Percent Change from 1992 to 2009 by MnDOT District



1992-2009 Percent Change					
DIST	VMT	Household	Labor Force	Employment	Population
1	22.8%	13.6%	14.2%	14.8%	4.2%
2	21.6%	14.2%	20.3%	24.7%	4.6%
3	56.8%	50.2%	46.2%	44.0%	38.0%
4	33.9%	19.2%	22.1%	29.3%	8.5%
M	37.2%	27.0%	17.8%	18.5%	23.0%
6	34.1%	21.4%	18.2%	20.9%	14.5%
7	28.1%	10.4%	14.8%	16.6%	2.7%
8	21.1%	7.8%	12.6%	14.6%	-1.0%

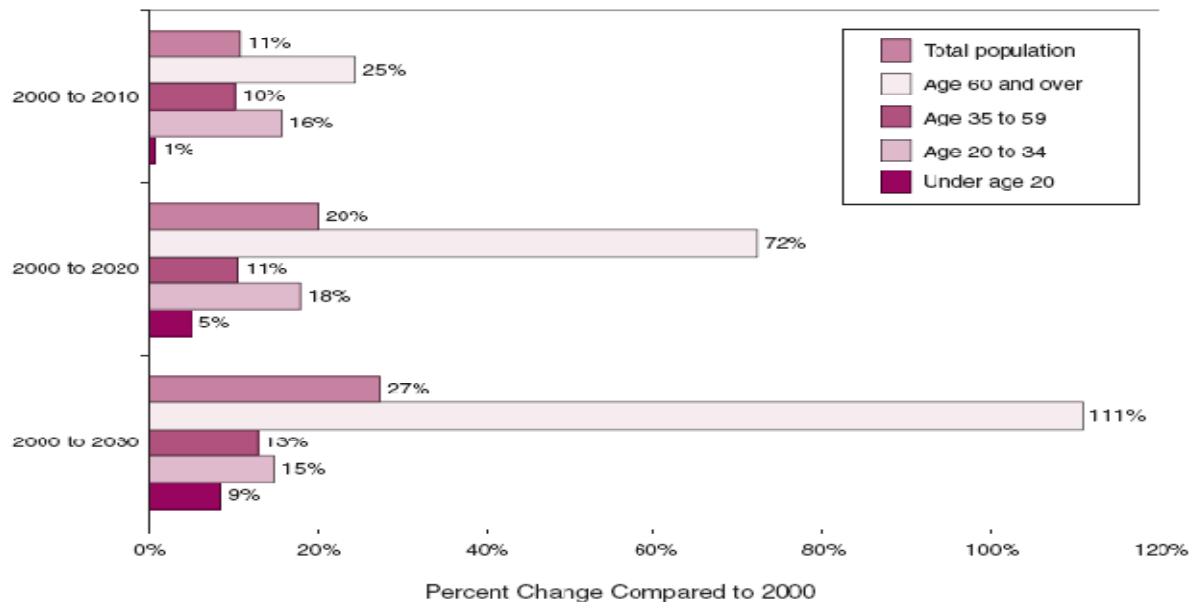
Source: Minnesota State Demographic Center;  
 Minnesota Department of Employment and Economic Development;  
 Mn/DOT, Office of Transportation Data and Analysis







### Cumulative Minnesota Population Growth by Age Group, 2000 to 2030



Source: Department of Health

The over 60 group is expected to be the fastest growing age group.

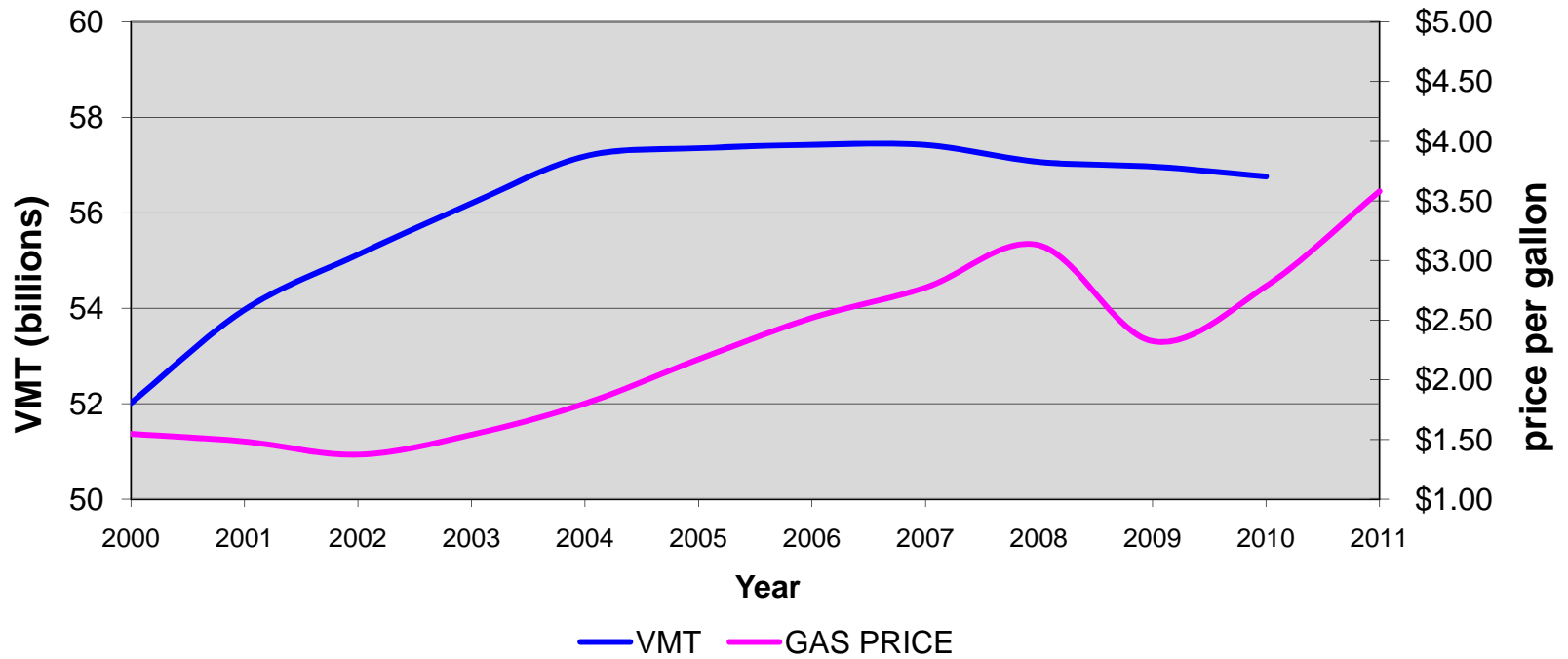
Based on the 2000 US census, 1/8 of people were in that age group.

By 2030, it is expected that over 1/4 of Minnesota's population will be over age 60.





## Gas Price vs. VMT in Minnesota





### Bikeability in Great Lakes states

Great Lakes Rank	U.S. Rank	State	Commuters who biked in 2008	Change from 2007 to 2008
1	12	Minnesota	0.86%	29.86%
2	15	Wisconsin	0.74%	8.56%
3	20	Illinois	0.54%	-0.26%
4	25	New York	0.47%	-1.34%
5	27	Michigan	0.45%	27.70%
6	28	Indiana	0.44%	36.66%
7	29	Pennsylvania	0.41%	29.07%
8	33	Ohio	0.34%	13.42%

Source: The 2007 and 2008 American Community Surveys by the U.S. Census Bureau



More than half of Minnesotans rode a bicycle last year, according to the Minnesota Department of Transportation 2010 Omnibus Transportation Survey.





Source: Metropolitan Council



**Metro Transit Ridership is up 3.2% in 2011, 6% in June.**

**It can surpass the record ridership in 2008.**





- Based on the latest American Community Survey data, just over 2% of the U.S. employee workforce consider home their primary place of work.



- Growth of Multiple Days per Week Employees telecommuting 2007 to 2008 = 14.1%
- 20 to 30 million people currently work from home at least one day a week.





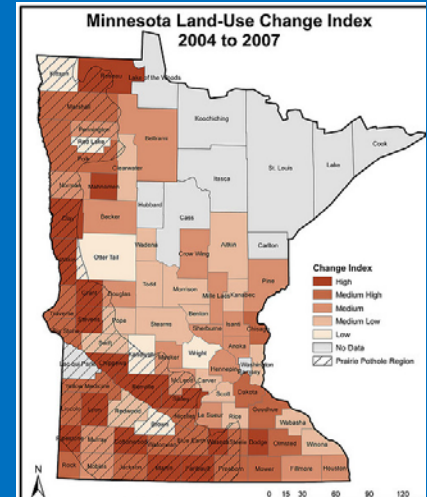
## In Summary

- Because of leveling in VMT, it has become more difficult for traffic forecasters to project AADT and ESAL growth.
- Some of the causes are assumed to be socioeconomic impacts such as reduced employment, rising fuel prices, and population decreasing in some Minnesota areas.
- We anticipate, at least in the near-term, that VMT growth will be flat or continue to decrease.



# Future Plans

- We will continue to monitor and report on VMT trends on Minnesota Roads.
- We also need to explore some other factors that impact VMT such as household income and land use change.
- It is important to collaborate with district planners, forecasters, and MPOs to validate our annual growth rates per specific county in Minnesota





# Thank you!



Chu Wei, P.E.

Traffic Forecasting and Analysis Section

Office: 651-366-3851

Fax : 651-366-3886

e-mail: [chu.wei@dot.state.mn.us](mailto:chu.wei@dot.state.mn.us)

